



## OFFICE SPACE FOR LEASE BUILDING 607

**3,135 SQ. FT.**

### Address:

1498 SE Tech Center Place  
Suite 200  
Vancouver, WA 98683

### Contacts:

#### **JAKE BIGBY**

jakeb@pactrust.com  
Phone: 503.624.6300

#### **CAITLIN KNECHT**

caitlink@pactrust.com  
Phone: 503.624.6300

### Highlights:

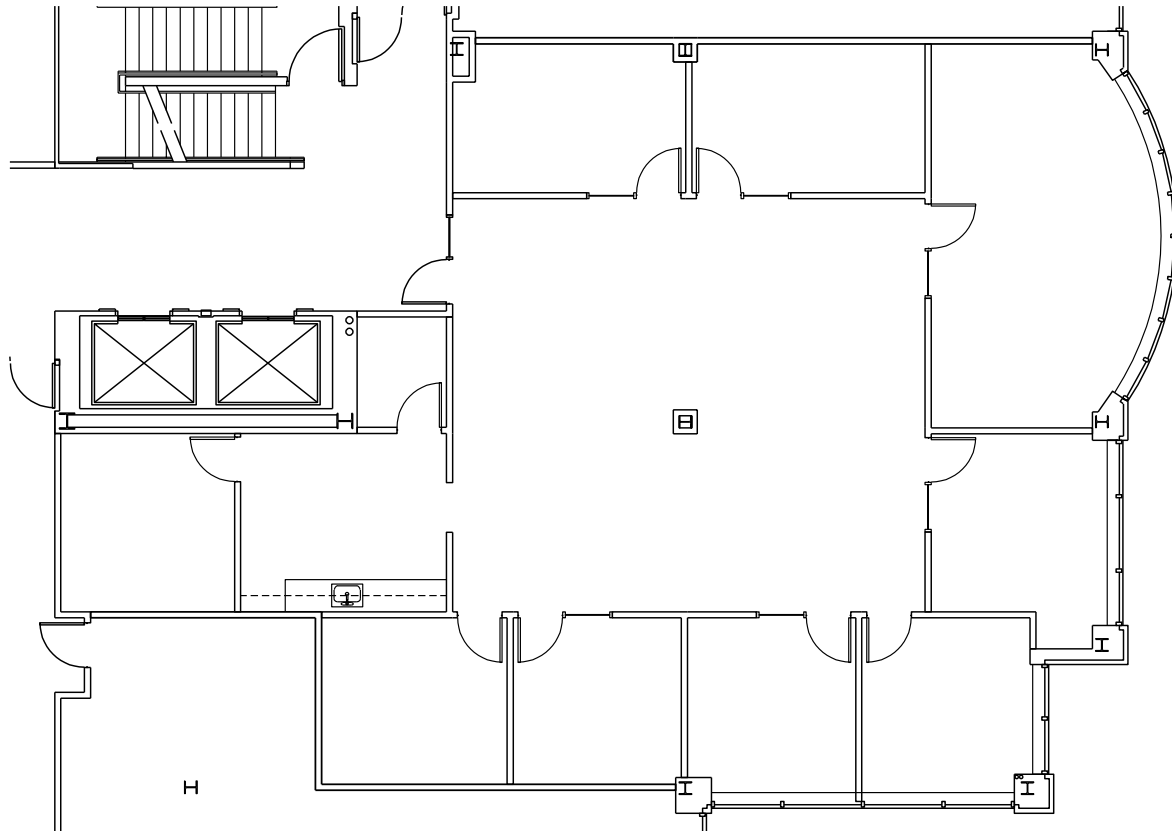
- Suite entrance on the 2nd floor lobby
- Common areas recently updated
- 4 /1,000 sq. ft. parking ratio

### Lease Rate:

- \$32.00/sq.ft., full service

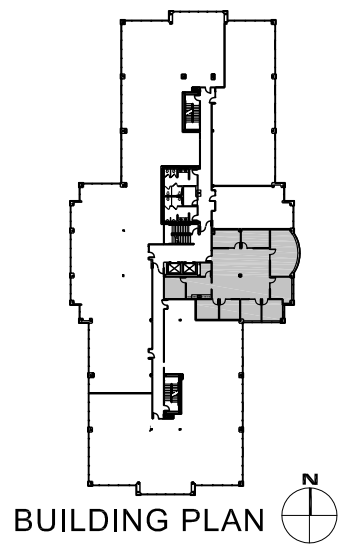
# OFFICE

BUILDING 607 | 1498 SE TECH CENTER PLACE, SUITE 200 | VANCOUVER, WA



## VACANCY

3,135 SF Total



BUILDING PLAN



**COLUMBIA TECH CENTER**

360.737.6300 or 503.624.6300 • [www.ColumbiaTechCenter.com](http://www.ColumbiaTechCenter.com)

**PacTRUST**



## Where Business Grows

Established in 1996, Columbia Tech Center continues to be one of Vancouver's premier business-friendly neighborhoods. With beautifully landscaped community spaces, pedestrian and bike paths, and convenient retail shops and restaurants, companies value having amenities their employees enjoy.

Columbia Tech Center also offers modern, thoughtfully designed apartment homes as well as hotel and lodging options. Residents and visitors enjoy seasonal community events such as the farmer's market and summer concerts, as well as the year-round central park and children's nature play area.

Clark County is one of the fastest growing regions in Washington state and in the Portland, Oregon metropolitan area. With easy access to Portland International Airport, and major north-south traffic via the I-5 and I-205 freeways, getting here is easy.

Welcome to Columbia Tech Center. We're excited you're here.