



OFFICE SPACE FOR LEASE

BUILDING 616

2,232 SQ. FT.

Address:

1211 SE Cardinal Ct.
Suite 125
Vancouver, WA 98683

Contacts:

JAKE BIGBY

jakeb@pactrust.com
Phone: 503.624.6300

CAITLIN KNECHT

caitlink@pactrust.com
Phone: 503.624.6300

Highlights:

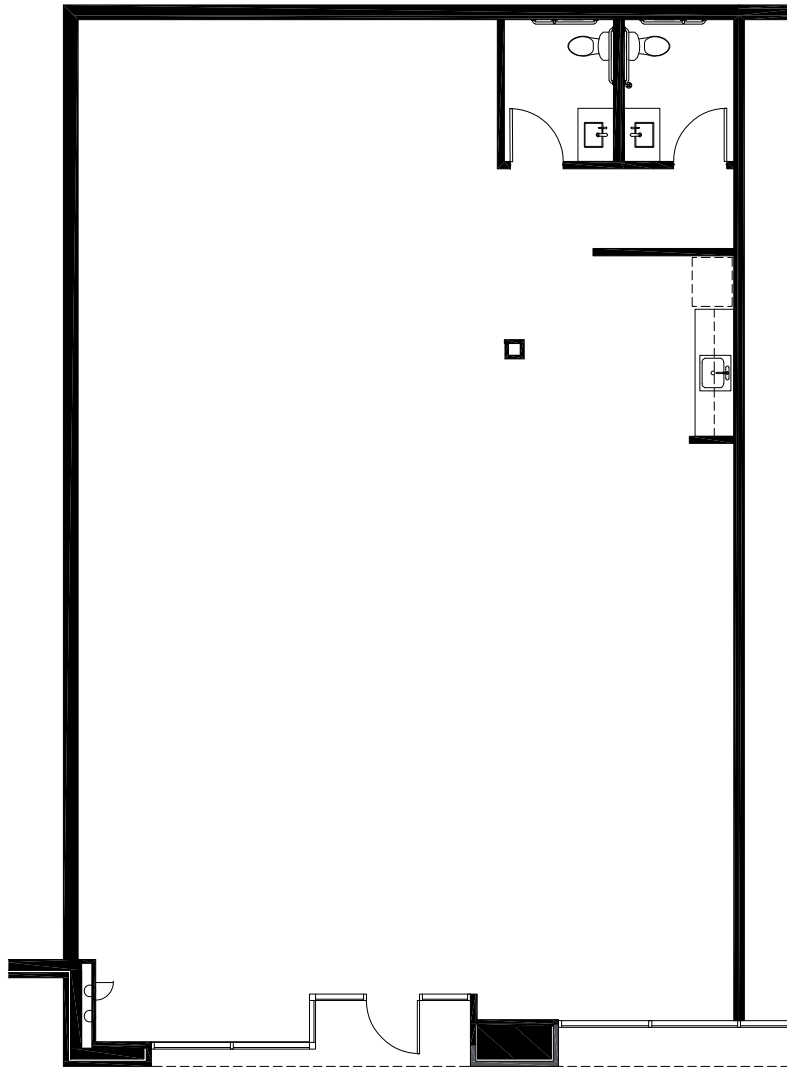
- 4 /1,000 sq. ft. parking ratio
- Walking distance to park amenities
- Stand-alone suite entrance off the parking lot

Lease Rate:

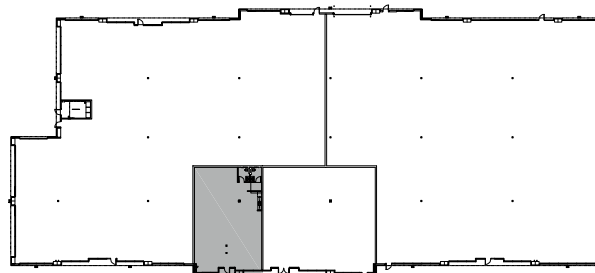
- \$22.00/sq.ft.,NNN

OFFICE

BUILDING 616 | 1211 SE CARDINAL CT., SUITE 125 | VANCOUVER, WA



AVAILABLE
2,232 SF Total



BUILDING PLAN z 



Where Business Grows

Established in 1996, Columbia Tech Center continues to be one of Vancouver's premier business-friendly neighborhoods. With beautifully landscaped community spaces, pedestrian and bike paths, and convenient retail shops and restaurants, companies value having amenities their employees enjoy.

Columbia Tech Center also offers modern, thoughtfully designed apartment homes as well as hotel and lodging options. Residents and visitors enjoy seasonal community events such as the farmer's market and summer concerts, as well as the year-round central park and children's nature play area.

Clark County is one of the fastest growing regions in Washington state and in the Portland, Oregon metropolitan area. With easy access to Portland International Airport; and major north-south traffic via the I-5 and I-205 freeways, getting here is easy.

Welcome to Columbia Tech Center. We're excited you're here.