



## OFFICE SPACE FOR LEASE

### BUILDING 631

**7,473 SQ. FT.**

#### Address:

17200 SE Mill Plain Boulevard  
Suite 290  
Vancouver, WA 98683

#### Contacts:

**JAKE BIGBY**

jakeb@pactrust.com  
Phone: 503.624.6300

**CAITLIN KNECHT**

caitlink@pactrust.com  
Phone: 503.624.6300

#### Highlights:

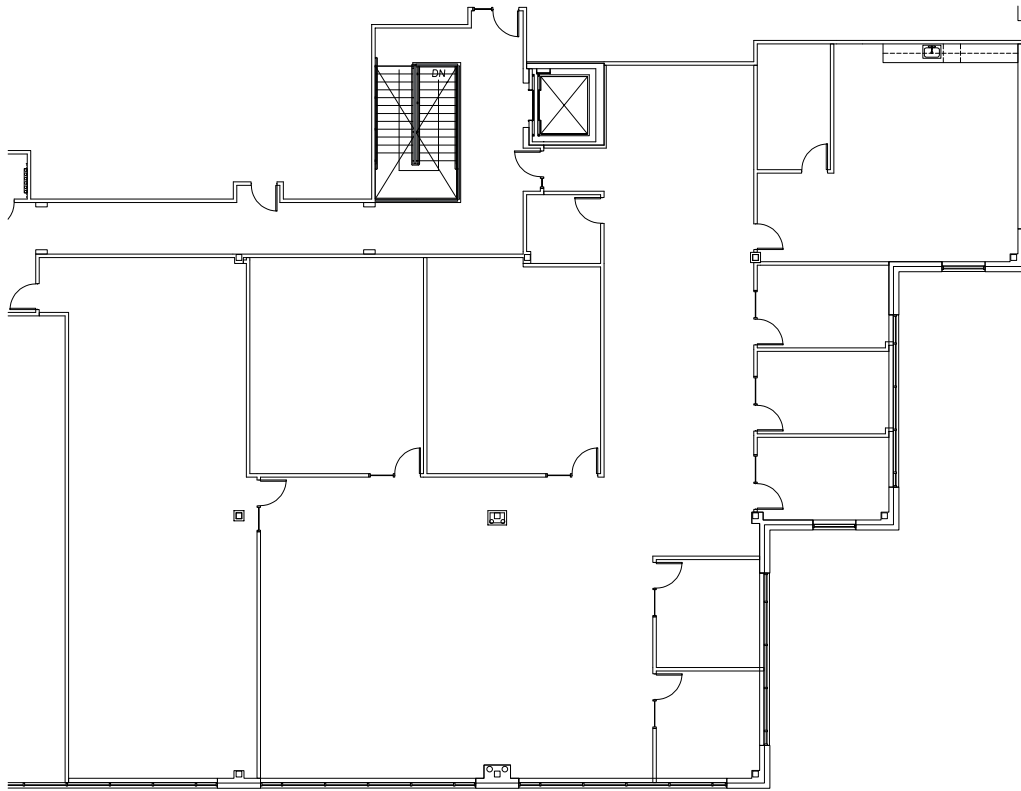
- 4 /1,000 sq. ft. parking ratio
- Great glass lines and views
- Walking distance to multiple restaurants and hotels
- Available 10/1/2024

#### Lease Rate:

- \$32.00/sq.ft., Full service

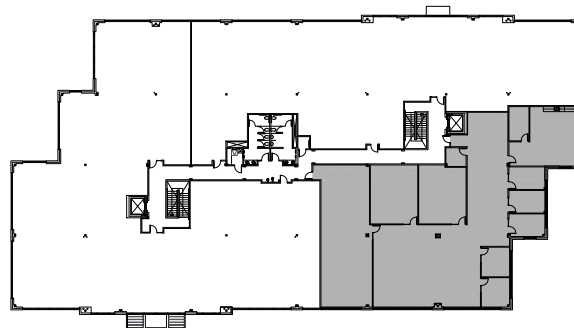
# OFFICE SPACE

BUILDING 631 | 17200 SE MILL PLAIN BOULEVARD, SUITE 290 | VANCOUVER, WA



**AVAILABLE**

7,473 SF Rentable



BUILDING PLAN 



## OFFICE SPACE

BUILDING 631 | 17200 SE MILL PLAIN BOULEVARD, SUITE 290 | VANCOUVER, WA



## Where Business Grows

Established in 1996, Columbia Tech Center continues to be one of Vancouver's premier business-friendly neighborhoods. With beautifully landscaped community spaces, pedestrian and bike paths, and convenient retail shops and restaurants, companies value having amenities their employees enjoy.

Columbia Tech Center also offers modern, thoughtfully designed apartment homes as well as hotel and lodging options. Residents and visitors enjoy seasonal community events such as the farmer's market and summer concerts, as well as the year-round central park and children's nature play area.

Clark County is one of the fastest growing regions in Washington state and in the Portland, Oregon metropolitan area. With easy access to Portland International Airport; and major north-south traffic via the I-5 and I-205 freeways, getting here is easy.

Welcome to Columbia Tech Center. We're excited you're here.



Columbia Tech Center • 360.737.6300 or 503.624.6300 • [www.ColumbiaTechCenter.com](http://www.ColumbiaTechCenter.com)

**PacTrust**