



OFFICE SPACE FOR LEASE

BUILDING 647

7,127 SQ. FT.

Address:

17700 SE Mill Plain Boulevard
Suite 180
Vancouver, WA 98683

Contacts:

Jake Bigby
jakeb@pactrust.com
Phone: 360.737.6300

Caitlin Knecht
caitlink@pactrust.com
Phone: 360.737.6300

Highlights:

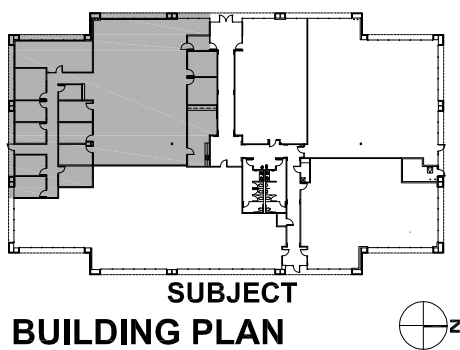
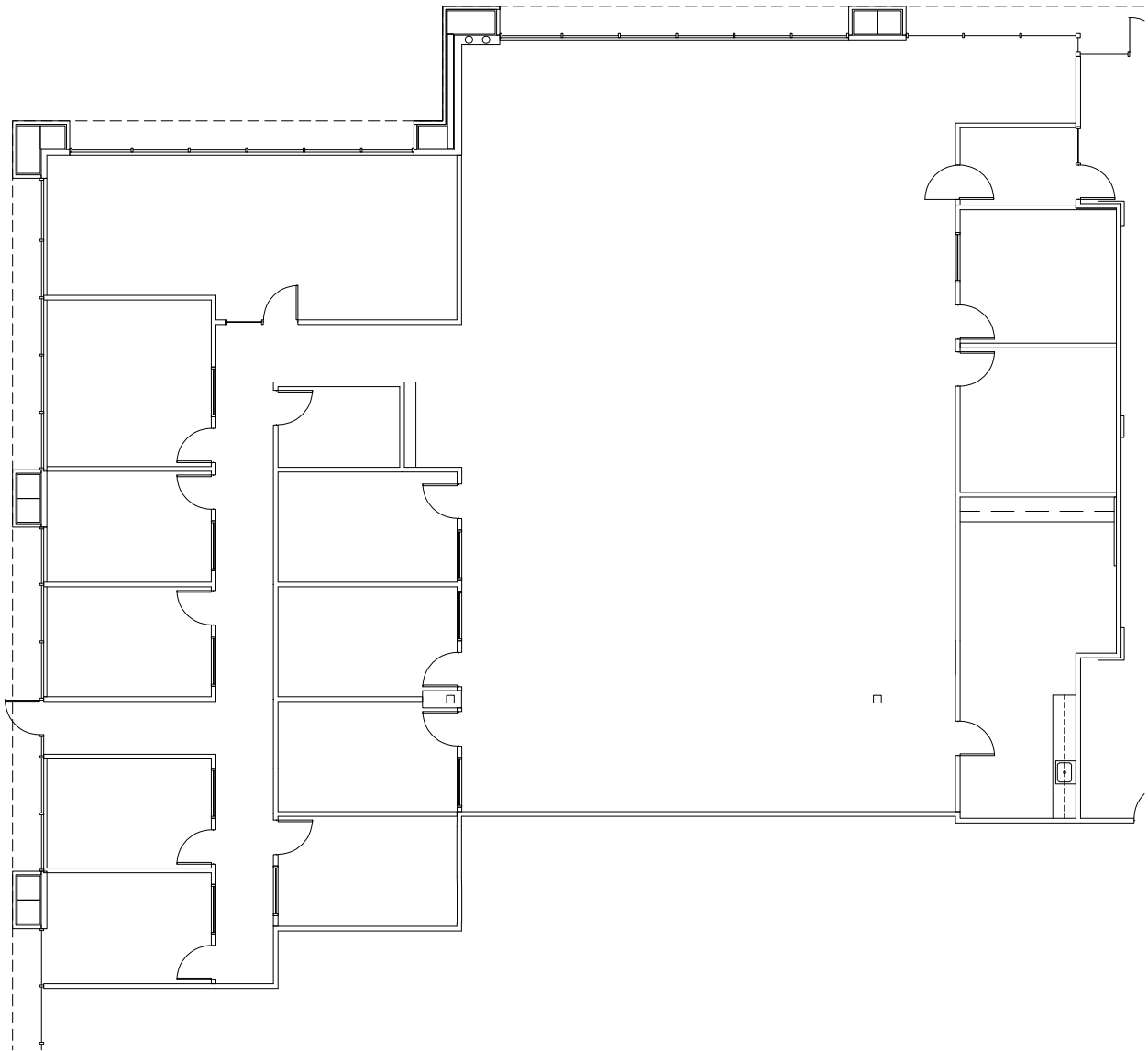
- Corner suite with great glass line
- Direct entrance off parking lot
- 2024 lobby update
- Upgraded finishes in suite
- Walking distance to restaurants, hotels and other retail amenities

Lease Rate:

- \$28.00/sq.ft., Full service

OFFICE SPACE

BUILDING 647 | 17700 SE MILL PLAIN BOULEVARD, SUITE 180 | VANCOUVER, WA



AVAILABLE
7,127 SF TOTAL





Where Business Grows

Established in 1996, Columbia Tech Center continues to be one of Vancouver's premier business-friendly neighborhoods. With beautifully landscaped community spaces, pedestrian and bike paths, and convenient retail shops and restaurants, companies value having amenities their employees enjoy.

Columbia Tech Center also offers modern, thoughtfully designed apartment homes as well as hotel and lodging options. Residents and visitors enjoy seasonal community events such as the farmer's market and summer concerts, as well as the year-round central park and children's nature play area.

Clark County is one of the fastest growing regions in Washington state and in the Portland, Oregon metropolitan area. With easy access to Portland International Airport; and major north-south traffic via the I-5 and I-205 freeways, getting here is easy.

Welcome to Columbia Tech Center. We're excited you're here.



Columbia Tech Center • 360.737.6300 or 503.624.6300 • www.ColumbiaTechCenter.com

PacTrust