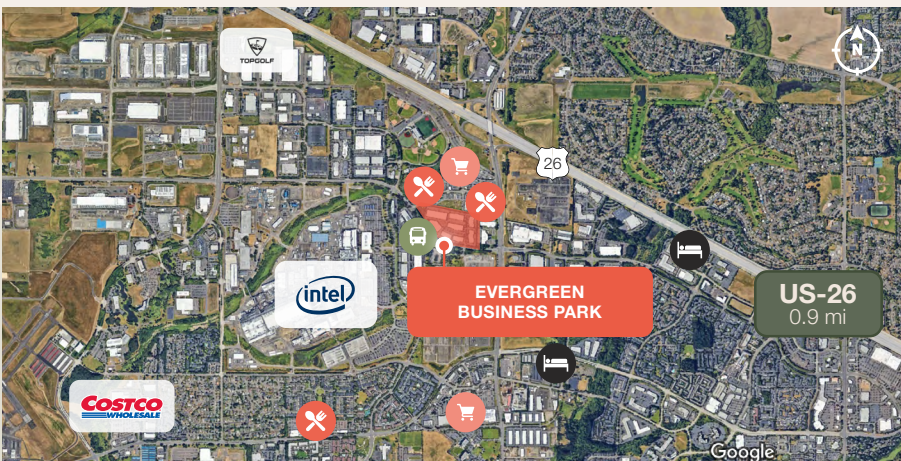


OFFICE/FLEX FOR LEASE

# Evergreen Business Park

7235 NW Evergreen Parkway, Hillsboro, OR 97124  
Building C, Suite 100



## Key Features



9,458 sq. ft. shell



8,517 sq. ft. office



1 dock door  
2 grade doors

---

14' clear height

---

Covered, shared loading platform with dock and grade access

---

End cap space

---

Less than a mile to US-26

---

One mile to Intel Ronler Acres

---

Several restaurants, hotels and services nearby

---

Walking distance to MAX light rail station

---

Lease Rate (NNN):  
\$19.00/sq. ft./yr

**Jake Bigby**  
jakeb@pactrust.com

**Caitlin Knecht**  
caitlink@pactrust.com

503.624.6300

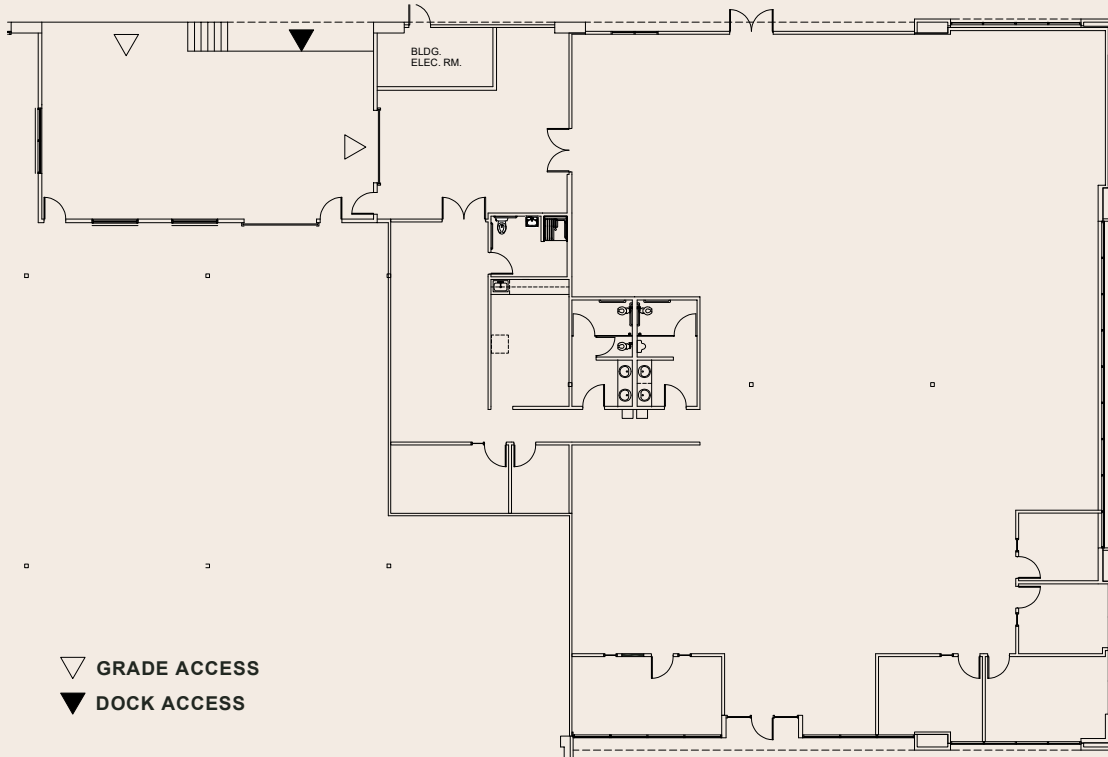
Owned & Managed by

**PACTRUST**

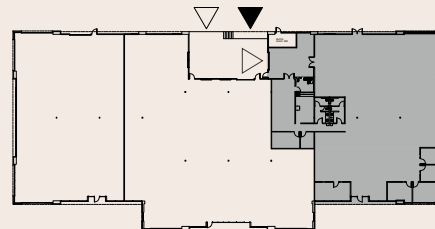
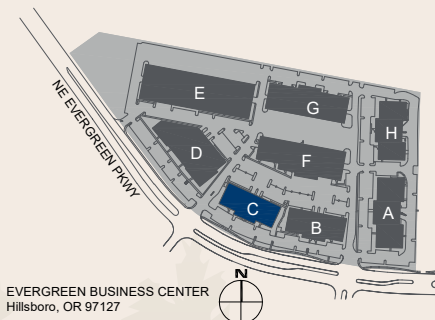
# Space Plan

7235 NW Evergreen Parkway, Hillsboro, OR 97124

9,458 Sq. Ft.



▽ GRADE ACCESS  
▼ DOCK ACCESS



**BUILDING PLAN**

**Jake Bigby**  
jakeb@pactrust.com

**Caitlin Knecht**  
caitlink@pactrust.com

503.624.6300  
www.PacTrust.com