

FLEX/INDUSTRIAL  
FOR LEASE

# International Corporate Center

11815 NE Glenn Widing Drive, Portland, OR 97220  
Building E



## Key Features



13,733 sq. ft. shell



9,614 sq. ft. office



1 grade door

14' clear height

Upgraded, modern finishes

LED lighting throughout

Each restroom equipped  
with showers

Ability for 53' trailers

Excellent access to  
I-205, I-84 and Portland  
International Airport

Lease Rate:

\$20.00/sq. ft./yr. NNN

Jake Bigby

jakeb@pactrust.com

Caitlin Knecht

caitlink@pactrust.com

503.624.6300

Owned & Managed by

**PACTRUST**

© 2025 PacTrust. All information supplied herein, including but not limited to measurements, dimensions, and specifications, is deemed reliable but is not guaranteed and should be independently verified. Any reliance on the information contained herein is at the user's own risk.

FLEX/INDUSTRIAL  
FOR LEASE

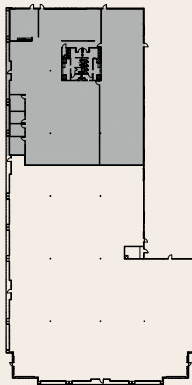
Owned & Managed by

**PacTrust**

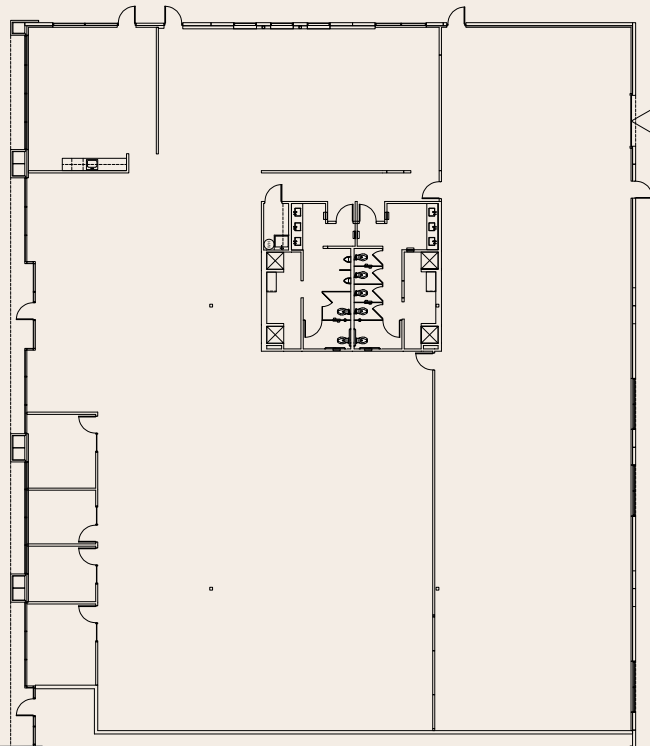
# Space Plan

11815 NE Glenn Widing Drive, Portland, OR 97220

13,733 Sq. Ft.



**BUILDING PLAN**



▽ GRADE ACCESS  
▼ DOCK ACCESS

**Jake Bigby**  
jakeb@pactrust.com

**Caitlin Knecht**  
caitlink@pactrust.com

503.624.6300  
www.PacTrust.com