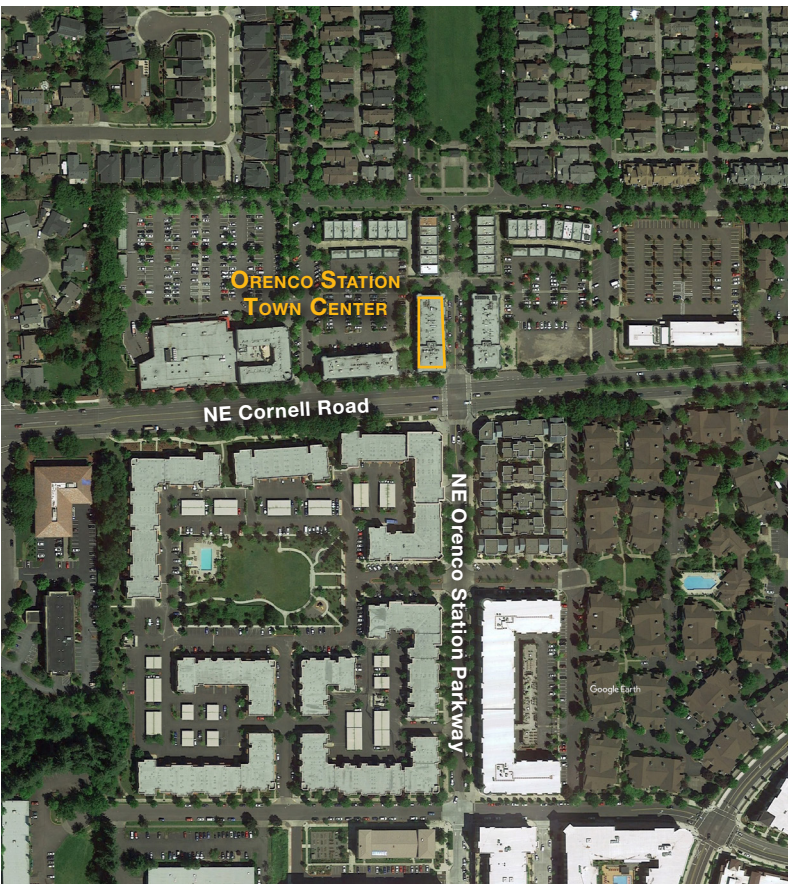


Orenco Station Town Center

6125 NE Cornell Road Hillsboro • 1,674 sq.ft. Office



100
First American Title
Second Floor
The Cathy Kingery Team 200
210
Evergreen Home Loans
Edward Jones Investments 220
Bob At Keller, Certified Public Accountant 230
Orenco Acupuncture & Wellness Clinic, LLC 240
Hillsboro Pediatric Clinic, LLC 290
Berger Seed Co.
Third floor
320
Westside OMS
Rupi Dhadi, D.D.S., M.D. 350
SauCo Properties, LLC 380
Trotter Law, LLC 390
Orenco Wellness Center home of Zetz Massage
Building Management 503-624-7787
Call Sam Briggs For Available Space 503-624-6300



OFFICE SPACE FOR LEASE

LOCATION Building 3
6125 NE Cornell Road
Suite 200
Hillsboro, OR 97124

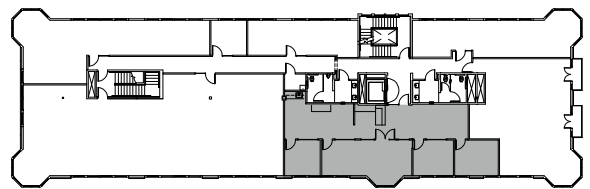
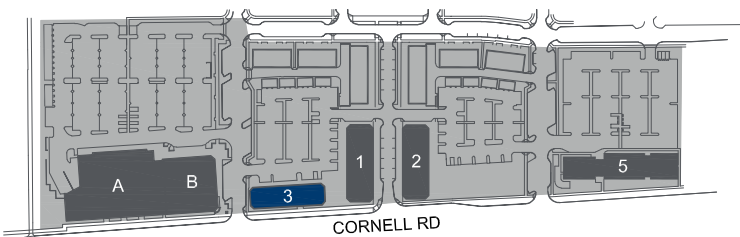
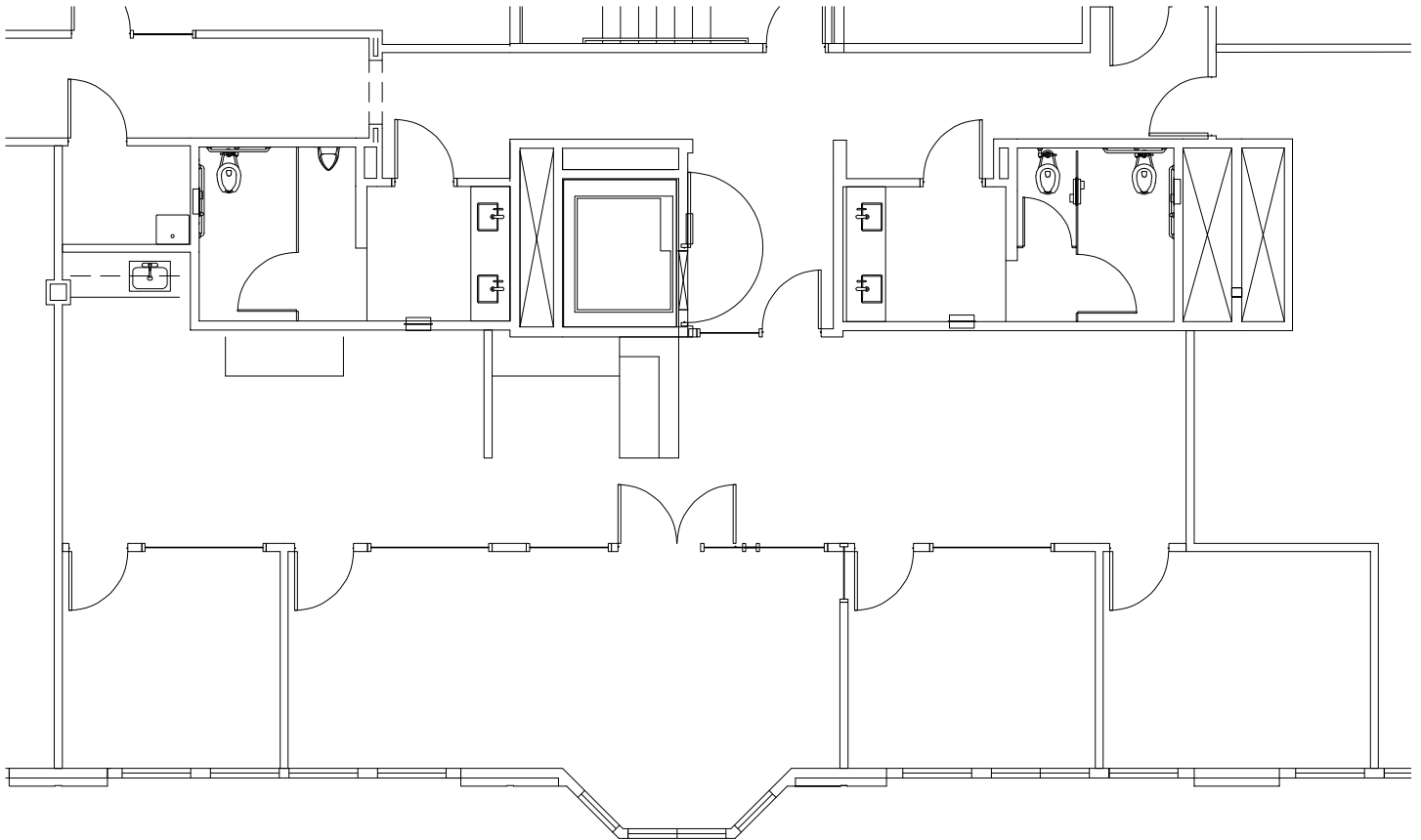
TOTAL SQ.FT. 1,674 sq.ft.

- FEATURES**
- Award-winning community
 - Close to TriMet's MAX Light Rail system
 - Mixed-use walkable environment

LEASE RATE \$32.00 sq.ft., full service

LEASING CONTACTS

SAM BRIGGS samb@pactrust.com 503.624.6300	CAITLIN KNECHT caitlink@pactrust.com 503.624.6300	JAKE BIGBY jakeb@pactrust.com 503.624.6300
--	--	---



ORENCO STATION TOWN CENTER
Hillsboro, OR 97124



BUILDING PLAN

15350 SW Sequoia Pkwy Suite 300 Portland OR 97224 • 503.624.6300 • pactrust.com

The square footage and rates quoted herein are subject to change. Square footage and rates are finalized with a signed lease agreement.

