

## LOCATION

Building F  
16525 SW 72nd Ave  
Portland OR 97224

## TOTAL SQ FT TOTAL SQ FT

16,509 sq.ft.  
9,248 sq.ft.

## DOCK DOORS DRIVE-IN DOORS CLEAR HEIGHT

1  
1  
16'

## FEATURES

Excellent exposure to 72nd Avenue  
Walking Distance to Bridgeport Village

## ANNUAL RATE

\$0.60/sq.ft. Shell  
\$0.90/sq.ft. Office  
NNN

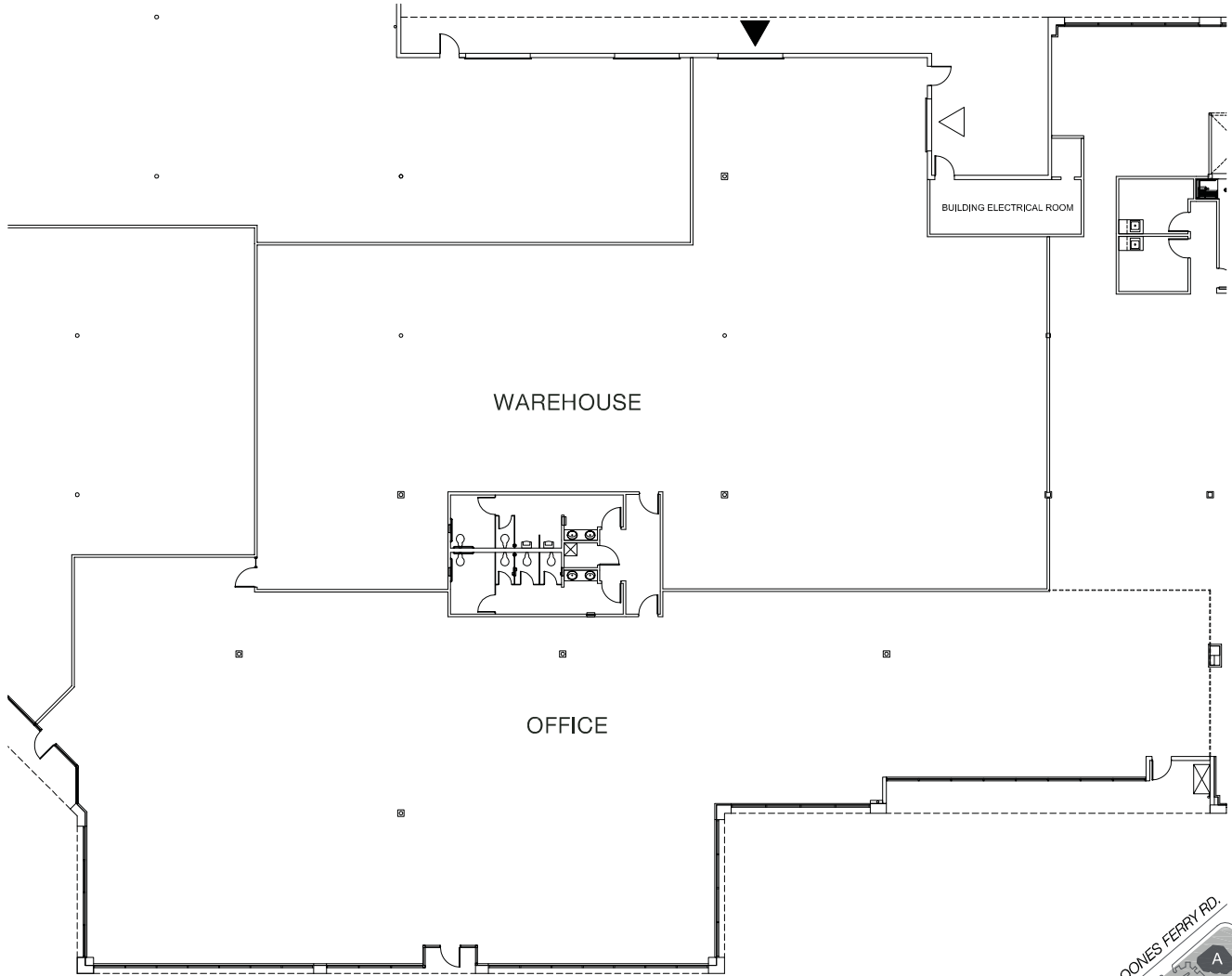
## LEASING CONTACT

Sam Briggs  
samb@pactrust.com  
503-624-6300

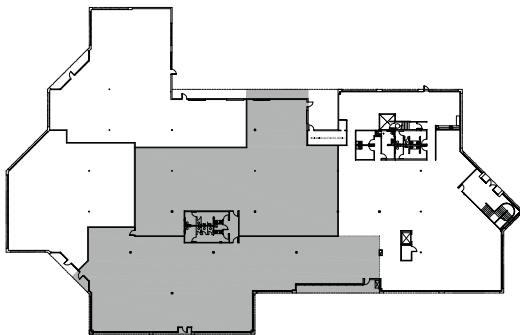
Dave Hicks  
daveh@pactrust.com  
503-624-6300



**TOTAL 16,509 SQ FT**  
**OFFICE 9,248 SQ FT**  
**CLEAR HEIGHT 18 FT**



- ▽ GRADE ACCESS
- ▼ DOCK ACCESS



PACTRUST BUSINESS CENTER  
 Portland, OR 97224



## BUILDING PLAN

15350 SW Sequoia Pkwy Suite 300 Portland OR 97224 • 503.624.6300 • [pactrust.com](http://pactrust.com)

*The square footage and rates quoted herein are subject to change. PacTrust can only guarantee square footage and rates with a signed lease agreement.*

