

INDUSTRIAL SPACE FOR LEASE

LOCATION

Building 1
4906 NE 122nd Avenue
Portland, OR 97230

**TOTAL SQ. FT.
OFFICE SQ. FT.**

2,250 sq.ft.
990 sq.ft.

**DRIVE-IN DOORS
CLEAR HEIGHT**

1
14'

FEATURES

- 4 miles to PDX Airport
- 10 miles to Downtown
- Immediate access to I-205

LEASE RATE

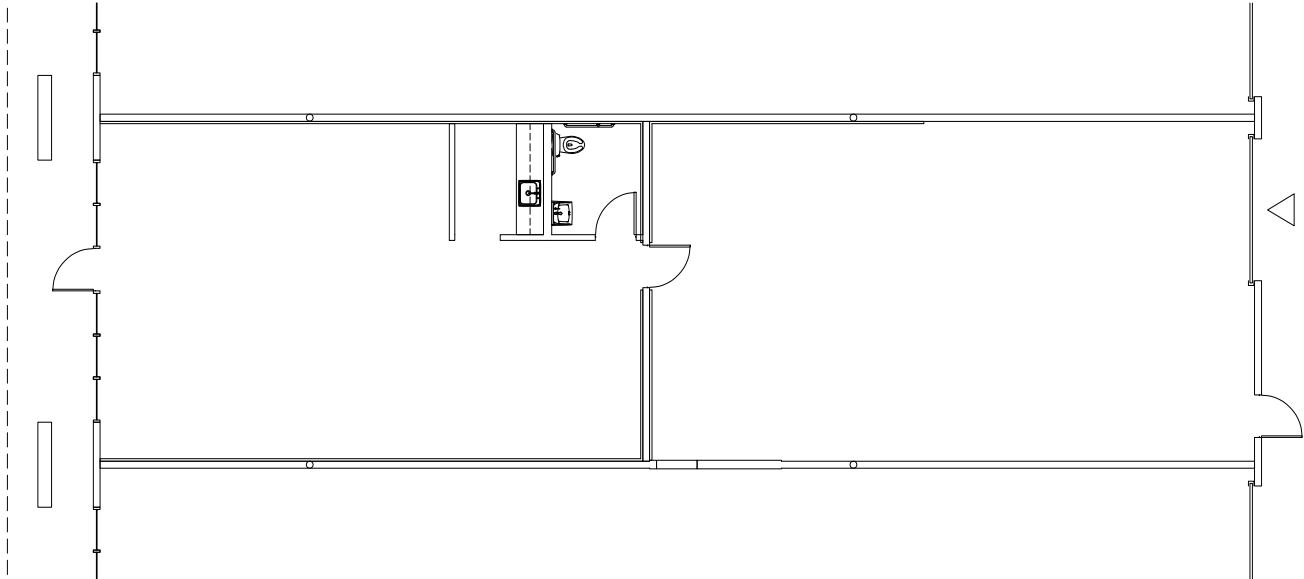
\$0.90/sq.ft. - Shell
\$1.10/sq.ft. - Office
NNN

**LEASING
CONTACT**

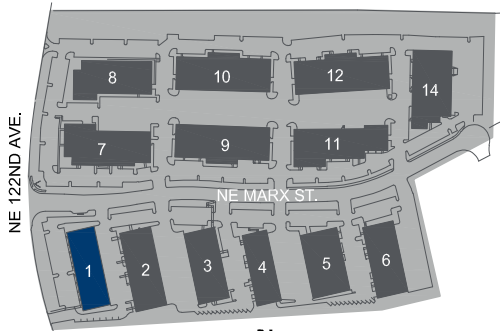
JAKE BIGBY
jakeb@pactrust.com
503.624.6300

CAITLIN KNECHT
caitlink@pactrust.com
503.624.6300

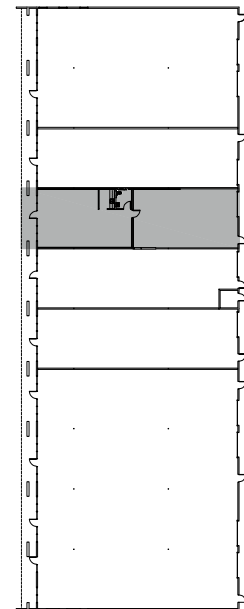




▽ GRADE ACCESS



PACIFIC BUSINESS PARK
Portland, OR 97230



BUILDING PLAN

