

### LOCATION

Building 1  
4908 NE 122nd Avenue  
Portland, OR 97230

### TOTAL SQ. FT. OFFICE SQ. FT.

2,250 sq.ft.  
1,227 sq.ft.

### DRIVE-IN DOORS CLEAR HEIGHT

1  
14'

### FEATURES

- 4 miles to PDX Airport
- 10 miles to Downtown
- Immediate access to I-205

### LEASE RATE

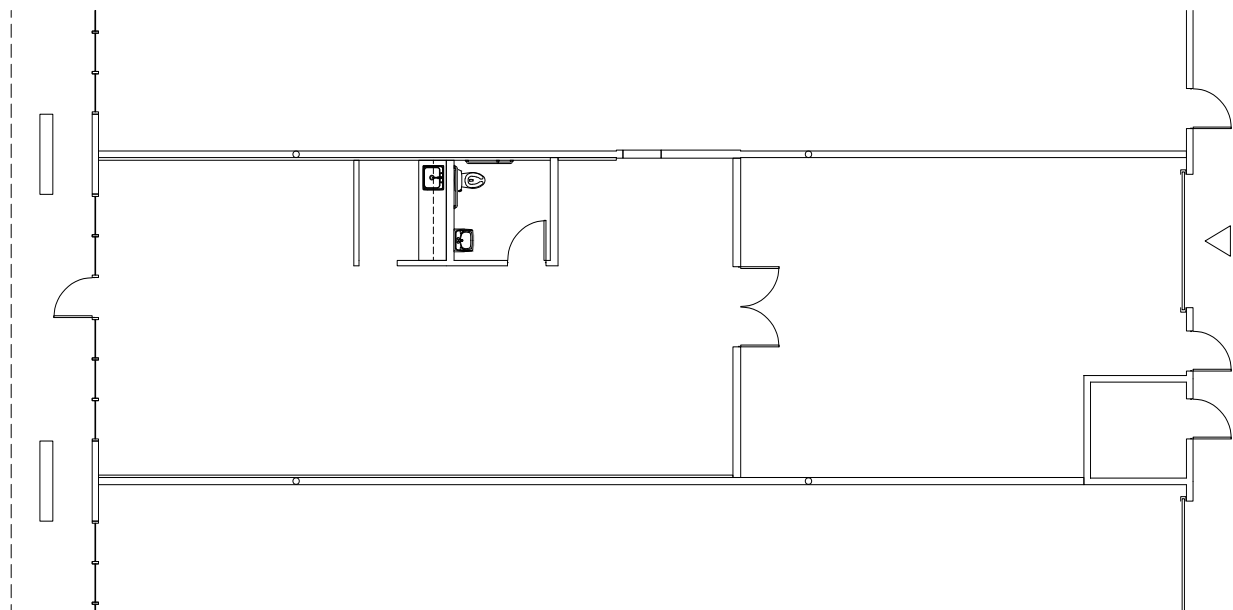
\$0.90/sq.ft. - Shell  
\$1.10/sq.ft. - Office  
NNN

### LEASING CONTACT

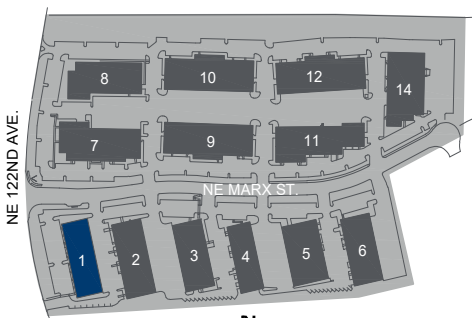
**JAKE BIGBY**  
jakeb@pactrust.com  
503.624.6300

**CAITLIN KNECHT**  
caitlink@pactrust.com  
503.624.6300

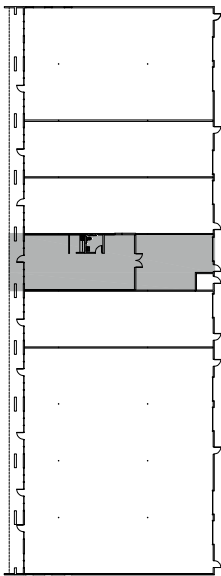




▽ **GRADE ACCESS**



PACIFIC BUSINESS PARK  
Portland, OR 97230



**BUILDING PLAN**

15350 SW Sequoia Pkwy Suite 300 Portland OR 97224 • 503.624.6300 • [pactrust.com](http://pactrust.com)

The square footage and rates quoted herein are subject to change. Square footage and rates are finalized with a signed lease agreement.

