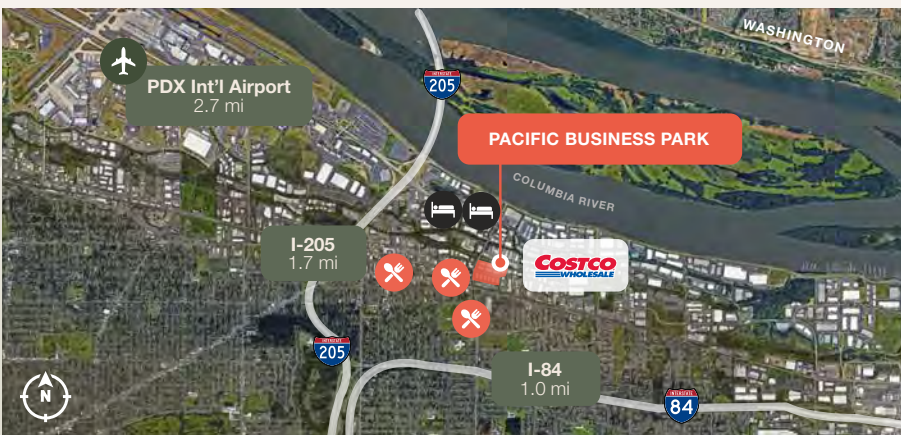


INDUSTRIAL/WAREHOUSE
FOR LEASE

Pacific Business Park

12207 NE Marx Street, Portland, OR 97230
Building 7



Key Features



3,660 sq. ft. shell



1,803 sq. ft. office



1 grade door

14' clear height

Fully conditioned throughout

LED lighting

Exposure on 122nd Ave

Corner space

2.7 miles to Portland
International Airport

Convenient access to I-205
& I-84

Lease Rate (NNN):

\$0.90/sq. ft. shell

\$1.10/sq. ft. office

Jake Bigby

jakeb@pactrust.com

Caitlin Knecht

caitlink@pactrust.com

503.624.6300

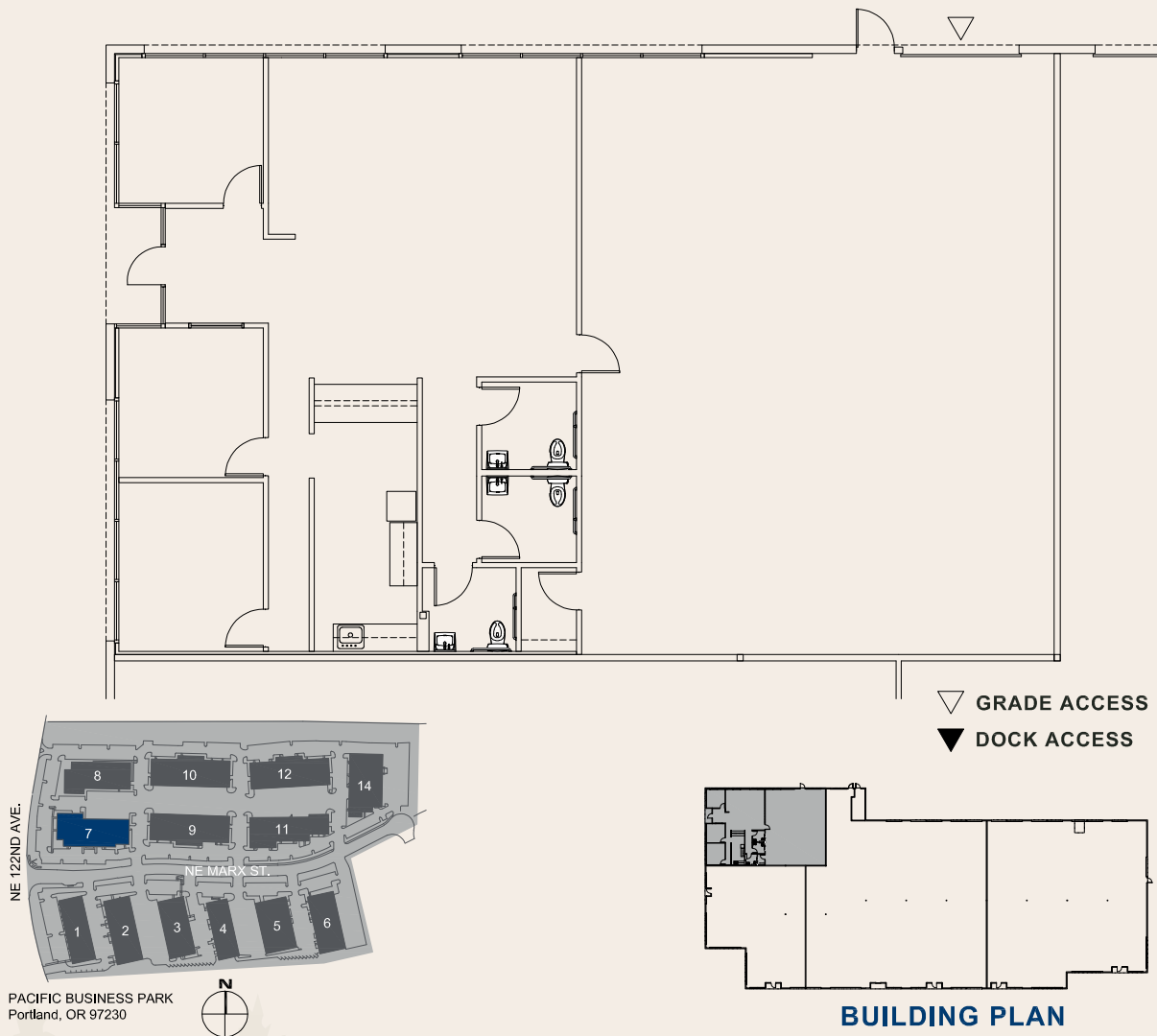
Owned & Managed by

PACTRUST

Space Plan

12207 NE Marx Street, Portland, OR 97230

3,660 Sq. Ft.



Jake Bigby
jakeb@pactrust.com

Caitlin Knecht
caitlink@pactrust.com

503.624.6300
www.PacTrust.com