

OFFICE FOR LEASE AVAILABLE NOW

# Pacific Corporate Center

15115 SW Sequoia Parkway, Suite 105, Tigard, OR 97224  
Building 7



## Key Features



4,382 sq. ft. office

Fully renovated lobby

Updated, modern finishes throughout suite

Multiple suite entrances

Attractive landscaping with walking paths

Immediate access to I-5

Excellent glass line

Walkable environment offering a variety of amenities including Starbucks and Gold's Gym

Lease Rate (NNN):

\$24.00/sq. ft./yr.

Jake Bigby

jakeb@pactrust.com

Caitlin Knecht

caitlink@pactrust.com

503.624.6300

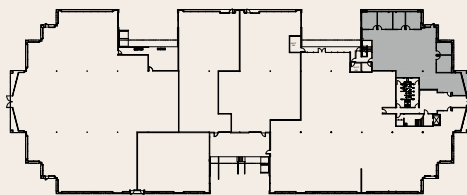
Owned & Managed by

**PACTRUST**

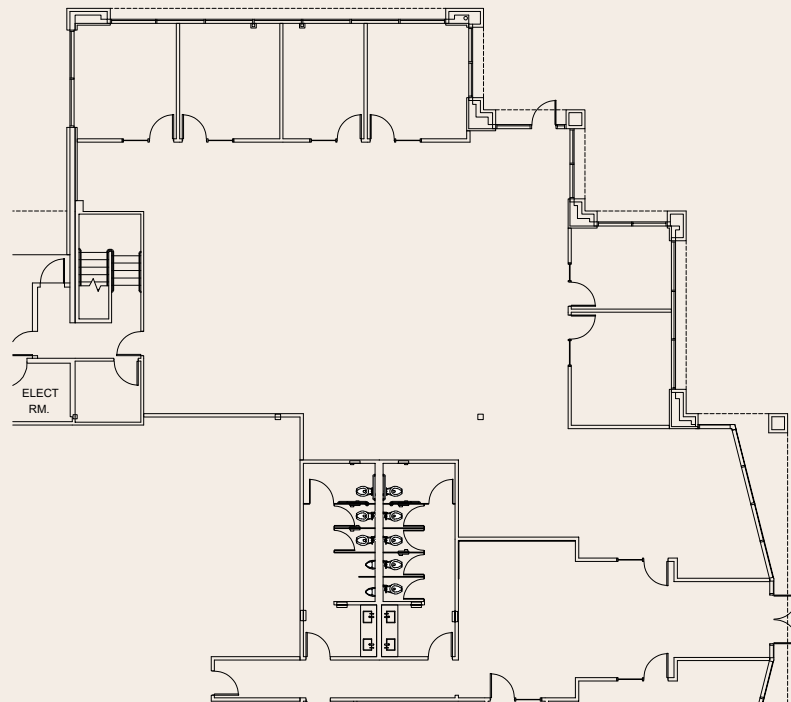
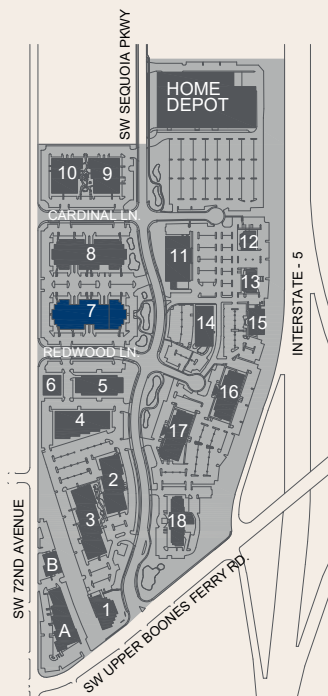
# Space Plan

15115 SW Sequoia Parkway, Suite 105, Tigard, OR 97224

4,382 Sq. Ft.



**BUILDING PLAN**



**Jake Bigby**  
jakeb@pactrust.com

**Caitlin Knecht**  
caitlink@pactrust.com

503.624.6300  
www.PacTrust.com