



LOCATION

Building 4
15353 SW Sequoia Parkway
Suite 190
Portland, OR 97224

TOTAL SQ.FT.

8,528 sq.ft.

FEATURES

- End cap space
- Ample glass and natural light
- New front entrance and landscaping
- Immediate access to I-5

RATE

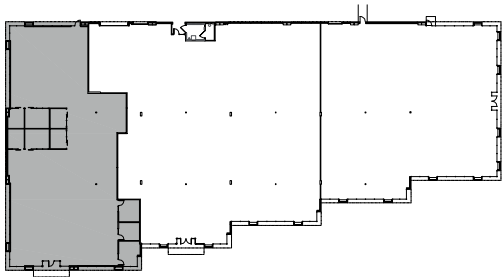
\$20.00/sq.ft., NNN

LEASING CONTACT

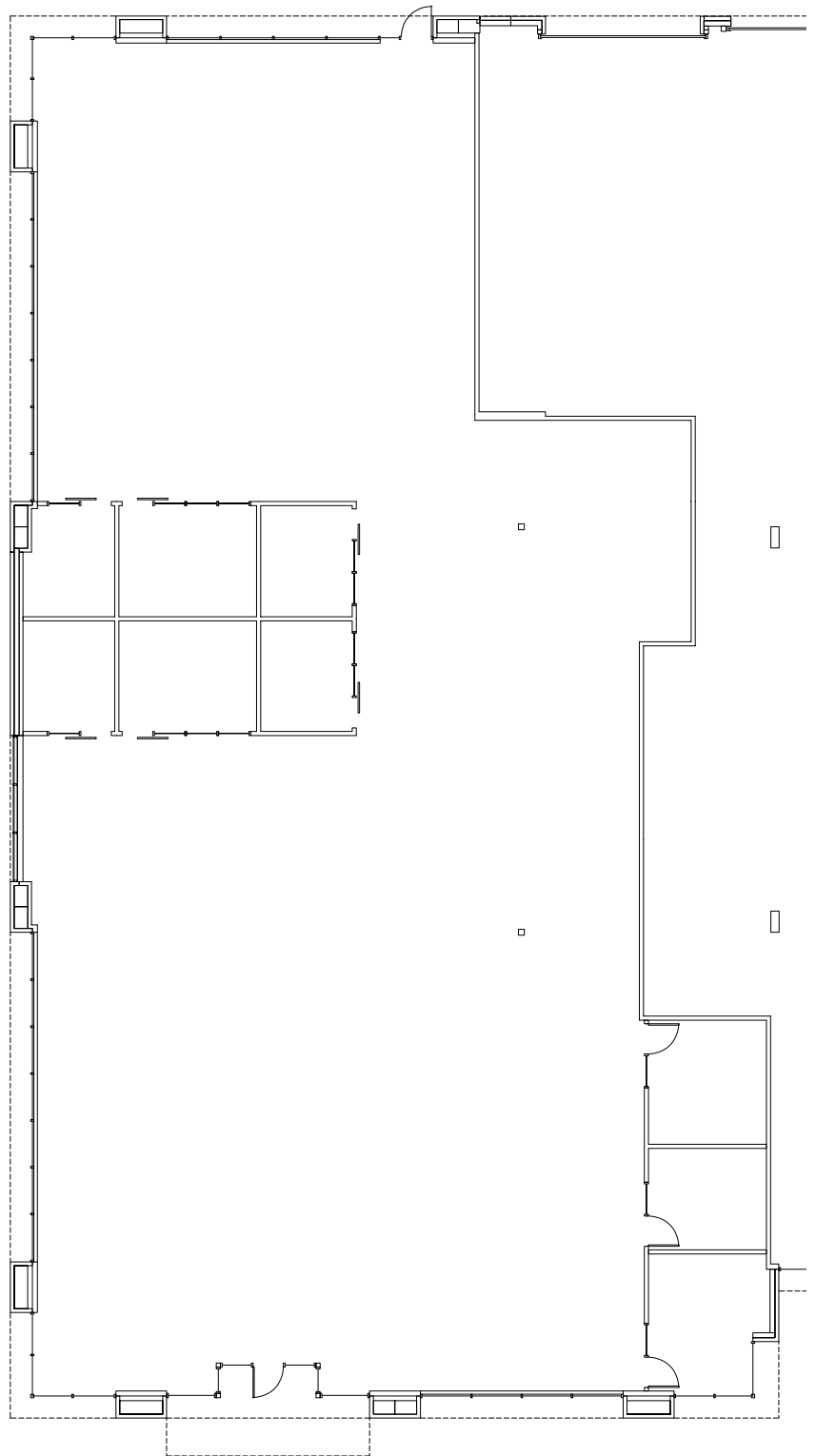
Sam Briggs
samb@pactrust.com
503-624-6300

Jake Bigby
jakeb@pactrust.com
503-624-6300





BUILDING PLAN



PACIFIC CORPORATE CENTER
Portland, OR 97224



15350 SW Sequoia Pkwy Suite 300 Portland OR 97224 • 503.624.6300

pactrust.com

The square footage and rates quoted herein are subject to change. Square footage and rates are finalized with a signed lease agreement.

