

DAVIS INDUSTRIAL PARK

12,000 Sq. Ft.
Warehouse/Industrial
Space For Lease



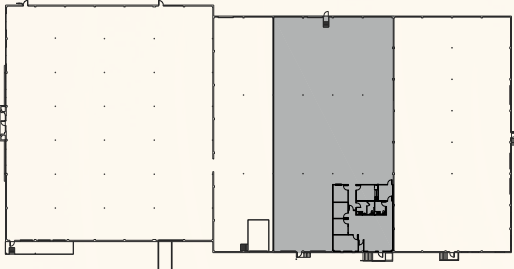
3261 NW Yeon Ave, Portland, OR 97210

PACTRUST

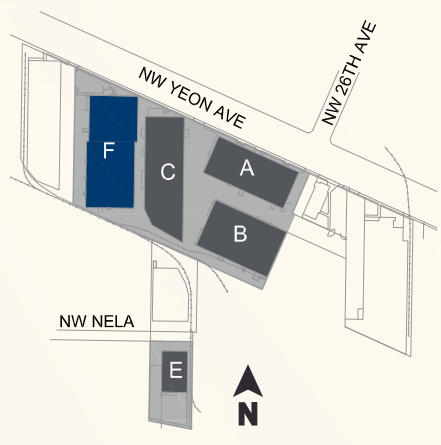
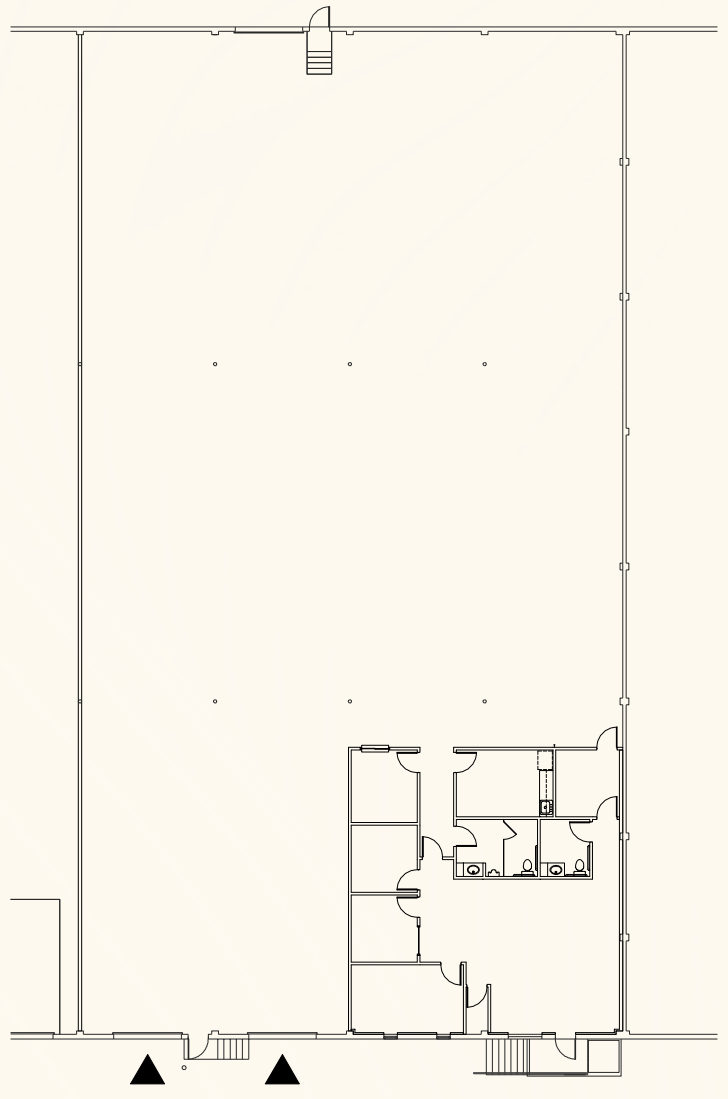
Space Plan | 14' Clear Height

PacTRUST

▲ Dock Access



Building Plan





Key Features



12,000 sq. ft shell



1,665 sq. ft. office



2 dock doors

LED lighting

Convenient access to I-405 and I-5

Desirable Guilds Lake location

Lease Rate:
\$0.85/sq. ft. shell
\$1.10/sq. ft. office

NNN Lease



Leasing Contacts

Jake Bigby

jakeb@pactrust.com

Caitlin Knecht

caitlink@pactrust.com

503.624.6300

www.pactrust.com

Owned & Managed by

PACTRUST

Davis Industrial Park
Warehouse/Industrial Space For Lease

3261 NW Yeon Ave
Portland, OR 97210

